

# ERCOT Market Watch by LCG

## December 2016



**ERCOT Market Watch by LCG** is a monthly summary of prices, congestion, and important events in the ERCOT market.

Contact LCG Consulting for further information and outlooks for future months.

Online at: [www.energyonline.com](http://www.energyonline.com)

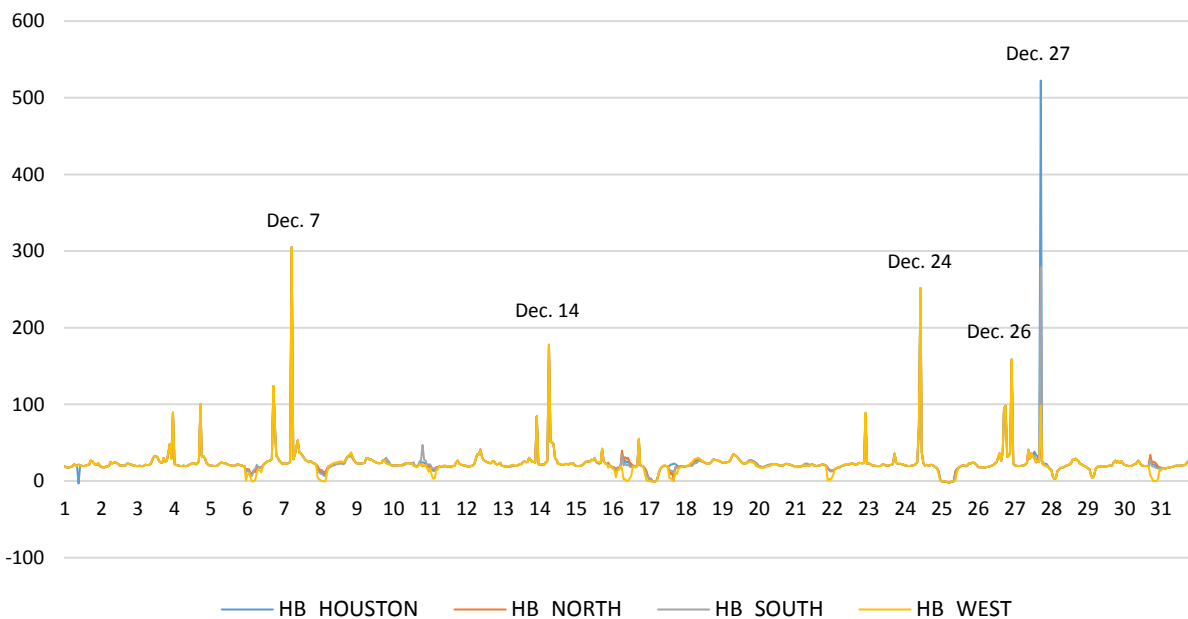
### Average Monthly Real-Time Hub Price Summary

	HB_HOUSTON	HB_NORTH	HB_SOUTH	HB_WEST
Weekday ON Peak	\$25.83	\$25.57	\$25.51	\$24.63
Weekend ON Peak	\$24.45	\$24.05	\$24.28	\$23.65
OFF Peak	\$20.47	\$20.65	\$20.31	\$19.36

**Release Date: January 18, 2017** – In December, the ERCOT Real-Time market experienced a smaller average basis from the Houston and South hubs to the North hub during in Peak WD hours than was seen in November. The Panhandle Interface was again the constraint with the highest rent accrued in RT. This was followed by the Morris Dido to Eagle Mountain (6265\_\_A) and Wagley Robertson to Summerfield (6271\_\_C) 138 kV lines in the North. The Holder 138/69 kV transformer was the most frequently binding constraint in RT for the month.

See below for a summary of congested elements and hub prices. LCG's MarketVision reports daily peak and off-peak real-time market nodal price forecasts available at: <http://energyonline.com/marketvision/>

### ERCOT December 2016 Average Hourly Hub Prices (Real-Time)



**DECEMBER 2016 REAL-TIME EVENT SUMMARIES**

**December 7** – This day saw hub prices climb in hour 6 to an hourly average of over \$305 at all four hubs. During this hour System Lambda reached \$745.15 for one interval. In hour 10 on this day the RTORPA reached \$8.39.

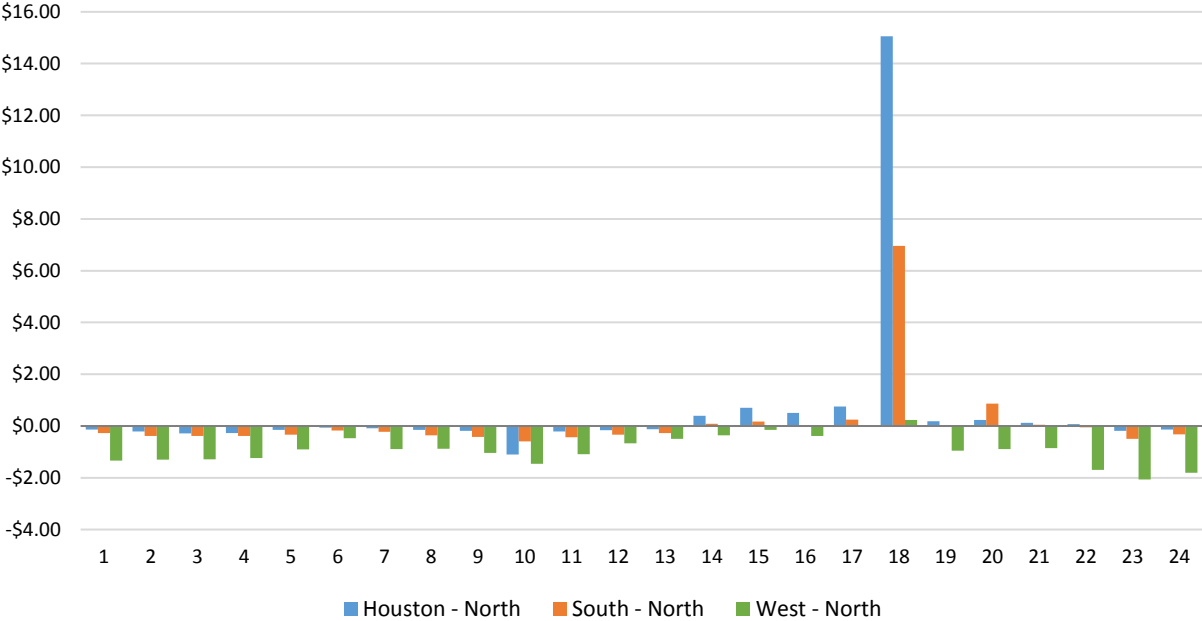
**December 14** – This day experienced high RT prices in hour 7. Hourly average prices at all four hubs reached \$177.84 at that time. During this hour System Lambda reached \$760.89. During hour 8 on this day the RTORPA reached \$13.16.

**December 24** – This day saw a price spike in hour 11 when prices at all four hubs reached an hourly average of \$251.63. On this day the RTORPA reached its maximum value for the month of \$50.16 for one interval. System Lambda reached \$748.29 during this hour as well.

**December 26** – Prices at all four trading hubs had hourly averages of over \$90 for hours 18 and 19, and the highest hourly average prices of the day occurred in hour 23 when prices at all four hubs reached \$158.72. On this day System Lambda reached \$787.08 in hour 19 while the RTORPA reached \$9.43 during the same hour.

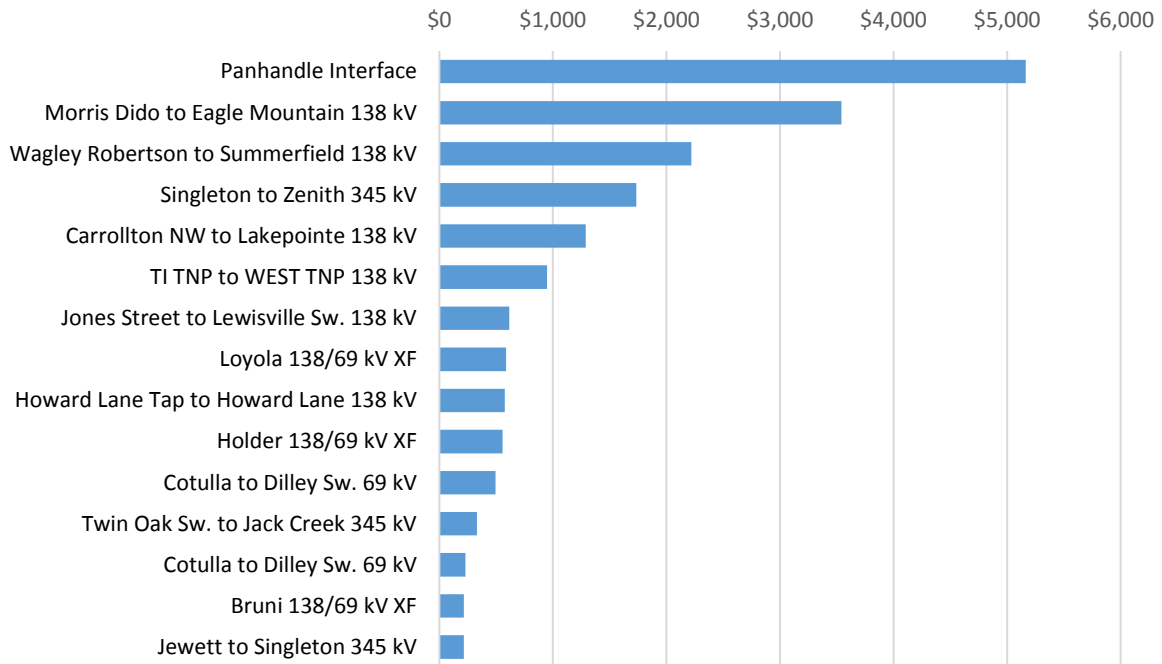
**December 27** – Very high prices in Houston were seen on this day in hour 18 with high prices in the South as well. The Houston hub had an RT price of \$522.46 while the South hub reached \$279.17. SNGZEN99\_A and 260\_A\_1 were highly congested at this time. On this day, System Lambda reached its highest value for the month when it reached \$948.48 for one interval. The RTORPA reached \$6.29 for one interval during hour 10.

**Hourly Average Basis to North Hub - December 2016**

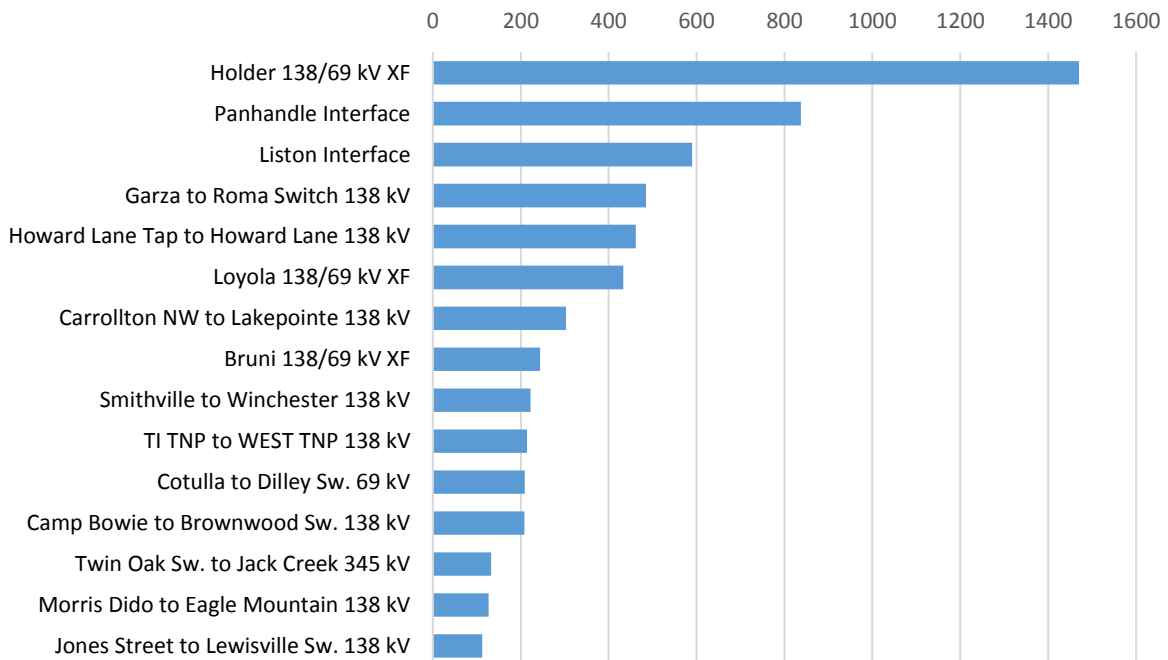


## DECEMBER REALTIME MARKET CONGESTION REPORT

### December 2016 - Top 15 Branches Congested (Congestion Rent - Thousands \$)



### December 2016 - Top 15 Branches Congested (Periods Congested- 5 min intervals)



LCG Consulting provides consulting services, forecasting and software for detailed modeling in the ERCOT region. We offer valuable insights for market participants in the day ahead and real-time markets and CRR auctions. For more information contact Julie Chien: [julie.chien@energyonline.com](mailto:julie.chien@energyonline.com)

**LCG Consulting**  
4962 El Camino Real, Suite 112  
Los Altos, CA 94022  
Tel: (+1) 650 962 9670

***Disclaimer** - The report herein are provided without warranty of any kind. LCG Consulting will not be liable to users or any third party, for indirect, consequential, special, incidental, punitive, or exemplary damages, including, without limitation, lost profits, lost savings and lost revenues.*